

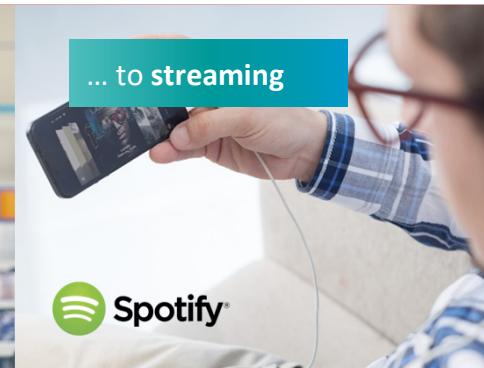
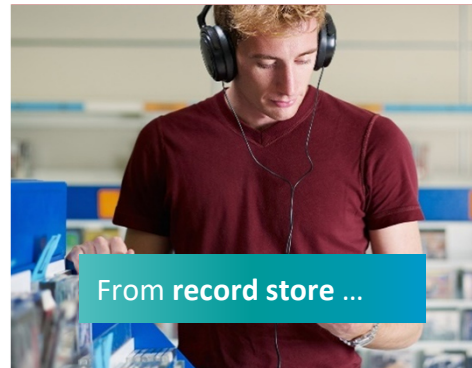


SIEMENS

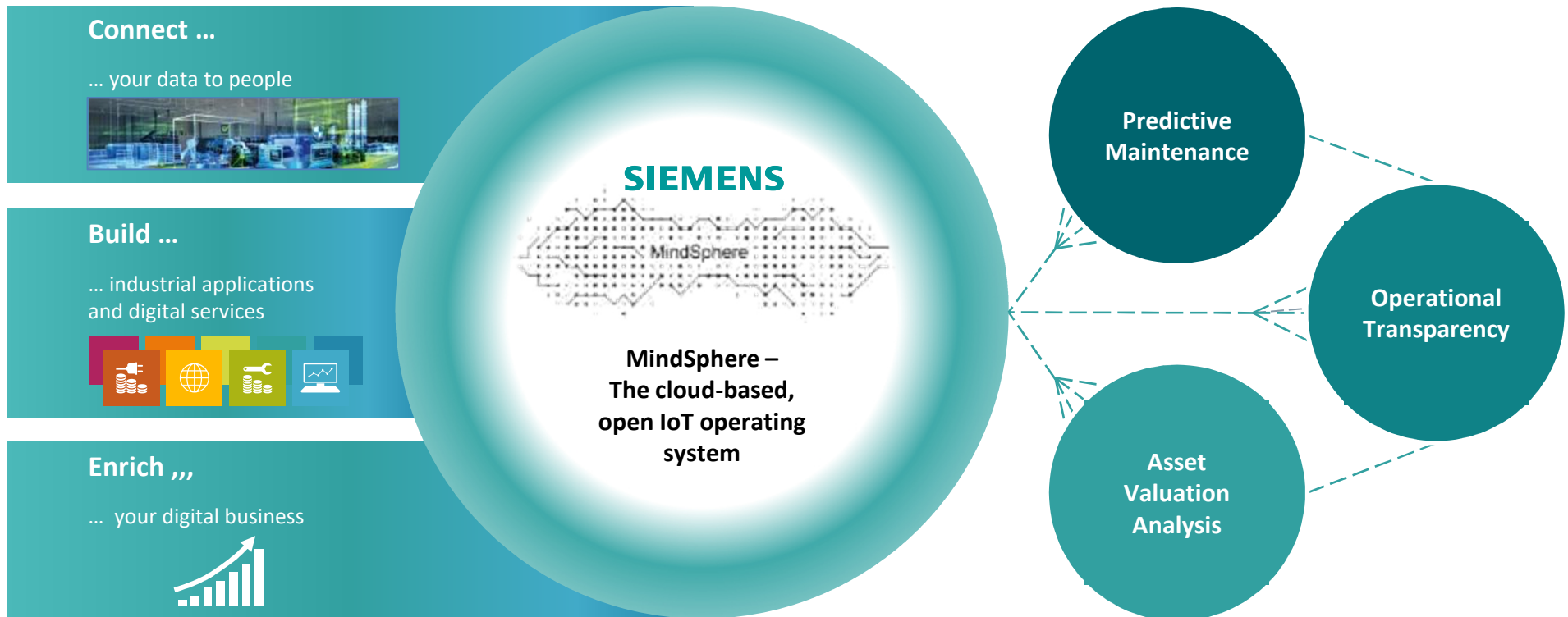
Cloud solution for Machine Tool

Andrea Gozzi









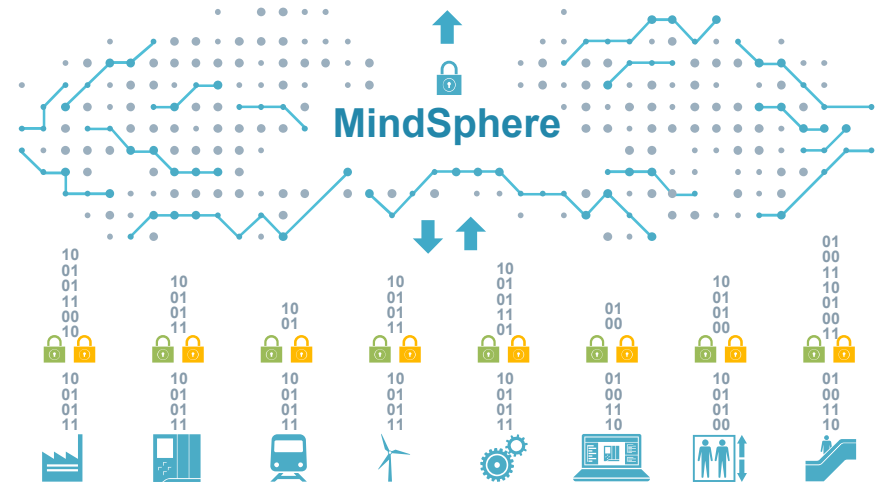
Condition Monitoring

Operational Transparency

Predictive Maintenance

Performance Intelligence

Complete Digital Twin



Gebr. Heller Maschinenfabrik



- Reduction of unplanned downtime
- Global data access
- Optimization of systems productivity with increase in quality for end-customer
- Greater end customer collaboration
- New business opportunity for pay-per-machining time

Machine Tool Analytics
OEMs can offer high-quality services



**Ton de Bruine, General Director,
Brinks Metaalbewerking B. V.**

'We have great confidence in the online services of SW and the underlying Siemens technology. They make our processes more reliable and our cost calculations more accurate.'

What we do

**Solutions for industrial Internet applications
(hardware, software, implementation)**

**Diagnostic services, condition monitoring,
preventive and condition-based maintenance**

Customer benefits

Customer can offer its own services

Fewer stoppages, lower consequential costs

**Improvement of the service and maintenance
processes**

Higher machine performance and production

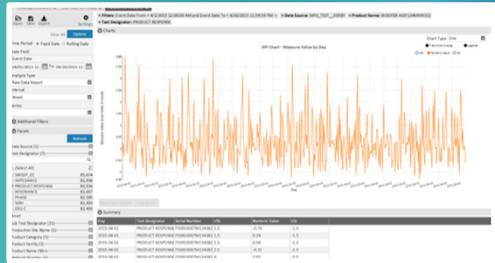
Insight Discovery

- Patented discovery algorithms
- Automatically analyze billions of data combinations
- Global and user-defined dashboards



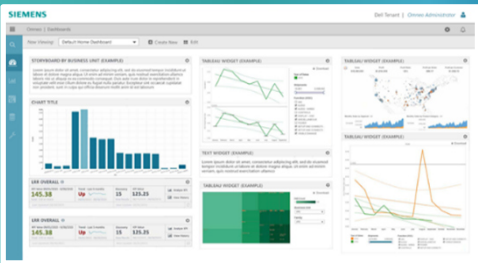
Parametric Data

- Analyze sensor-based data
- Quickly access relevant test data and performance measurements
- Export data for further analysis



Advanced Data Visualization

- Tableau inside of Product Intelligence
- Create compelling visualizations
- Combine Product Intelligence results with other visual data





Manage MyMachines

Reduce unplanned down times and increase efficiency levels of your machine tools

A single app for

- Displaying and managing your global machine fleet
- Visualizing relevant information in the machine tool overview
- Setting intuitive rules and requests
- Visualizing critical variables to create meaningful analysis
- Being able to offer your own digital services

Data access

- Dedicated SINUMERIK asset configuration
- Time series data (NC, PLC, drive variables)
- Event-based data acquisition, recording of alarms

Connectivity

- Connectivity in SINUMERIK, FANUC, HEIDENHAIN, ...
- Faster and simpler onboarding process, secure protocol
- Plug-and-play for most CNC, without gateway devices



Make your production more efficient and flexible

Manage MyMachines

Fleet Manager > sag-fmtde / TAC_SiemensAG / TAC / EMCO_HYPERTURN_65

Assets 6 / 136

Filter & sort + Search

Demorack_828D_TAC	28 ▲
DMU60eVo	27 ⓘ
EMCO_HYPERTURN_65	89 ▲
HYUNDAI_WIA_I_CUT_380T	1 ▲

Customer: TAC_SiemensAG
Germany, Frauenaucher Straße 80, 91058 Erlangen

Customer: TAC_SiemensAG
Germany, Frauenaucherstr. 80, 91056 Erlangen

Customer: TAC_SiemensAG
Germany, Frauenaucherstr. 80, 91056 Erlangen

Customer: TAC_SiemensAG
Germany, Frauenaucherstr. 80, 91056 Erlangen

FMT Dashboard

EMCO_HYPERTURN_65

Online since 18.07.2017 05:15 last 8 hours

Machine status

unknown status

Production

Technical distur...

organizational d...

no disturbance

23:00 18. Jul 01:00 02:00 03:00 04:00 05:00 06:00

Connection status: Online

Feed Override: 100 %

Spindle Override: 100 %

NC program status: cancelled

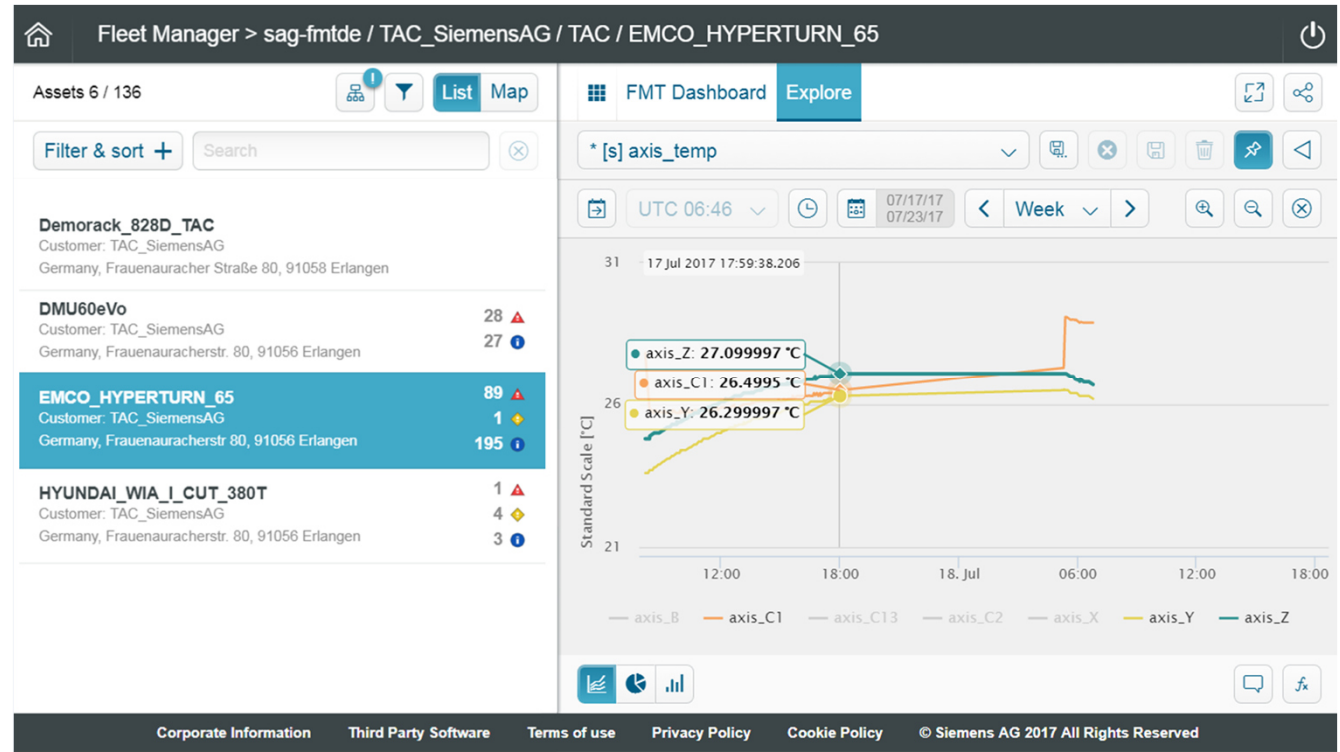
Operation mode:

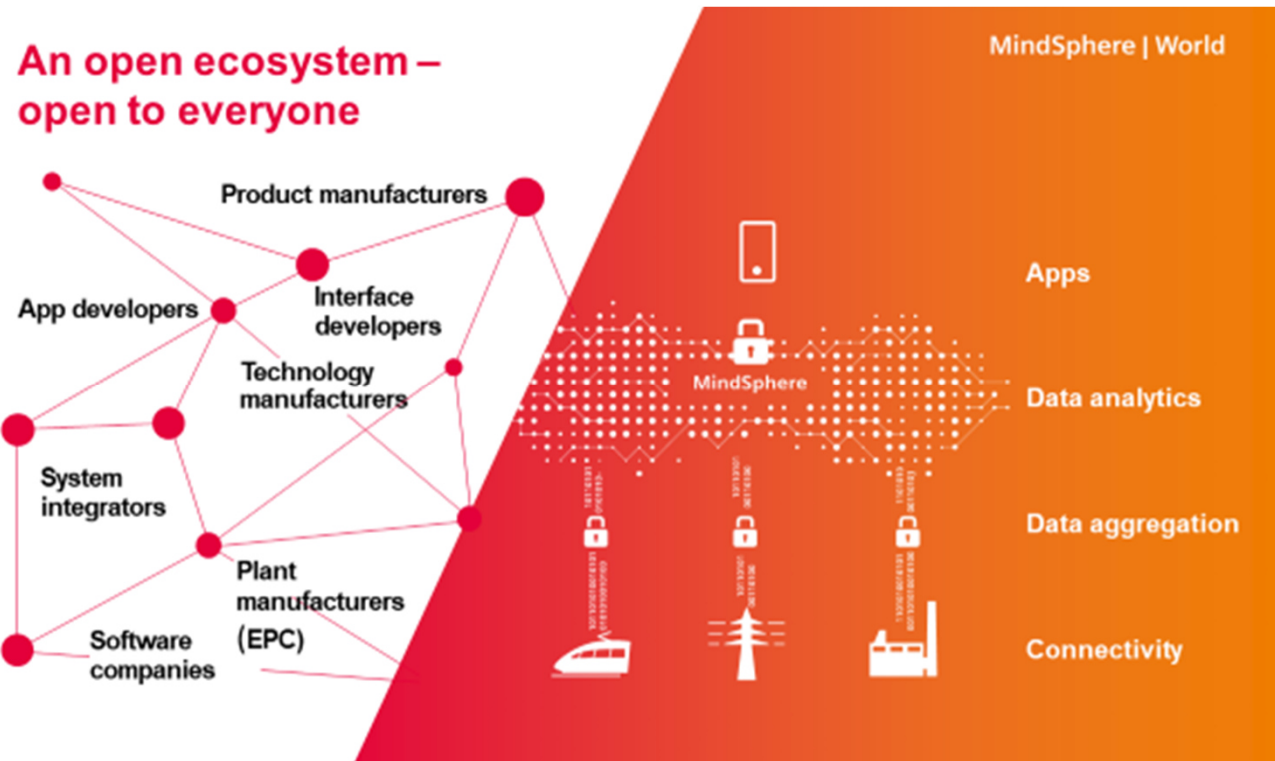
NC program status

Corporate Information Third Party Software Terms of use Privacy Policy Cookie Policy © Siemens AG 2017 All Rights Reserved

Secure and Easy
Teleservice

Manage
MyMachines/
Remote





PAD 13
D97





**Digitalization in
Machine Tool Manufacturing
Implement now!**

Pad. 13 Stand C50 - D63